

# INSTRUCTION MANUAL

---

## SERVA ICPL™ Triplex-Kit

(Cat. No. 39231.01)



SERVA Electrophoresis GmbH • Carl-Benz-Str. 7 • D-69115 Heidelberg  
Phone +49-6221-138400, Fax +49-6221-1384010  
e-mail: [info@serva.de](mailto:info@serva.de) • <http://www.serva.de>

## Contents

<b>1. SERVA ICPL™ (Isotope Coded Protein Label) Triplex-Kit</b>	<b>2</b>
1.1. Kit components	2
1.2. Storage conditions	3
<b>2. ICPL™ Triplex protocol</b>	<b>4</b>
2.1. Overview of the ICPL™ reagent technology	4
2.2. Dissolution of the protein samples	5
2.1.1. Required solutions	5
2.1.2. Procedure	5
2.3. Determination and adjustment of the protein content of the samples	6
2.4. Reduction and blocking of cysteine residues (Carbamidomethylation)	6
2.4.1. Required solutions	6
2.4.2. Procedure	6
2.5. Isotope labelling of the protein samples	7
2.5.1. Required solutions	7
2.5.2. Procedure	7
2.6. Purification of the labelled proteins by acetone precipitation	8
2.6.1. Required solutions	8
2.6.2. Procedure	8
2.7. Enzymatic digestion of the labelled proteins	8
2.7.1. Required solutions	8
2.7.2. Procedure	9
2.8. Peptide labelling with ICPL™	9
2.9. Mass spectrometry and data analysis	10
2.9.1. Mascot search	10
2.9.2. Quantification	10
<b>3. Quantification of the protein test mixture by the ICPL™ method</b>	<b>12</b>

Ver 09/07

## 1. SERVA ICPL™ Triplex-Kit

The ICPL™ methodology is based on the isotope labelling of free amino groups of isolated intact proteins by amine specific reagents. Therefore the method is suitable for all kinds of protein samples, inclusive of extracts of tissue or body fluids, and is compatible with all currently in proteome studies used separation methods. The ICPL™-technology is now available with a third label. The kit allows for the relative quantification of three different protein samples in one experiment and the efficient, accurate and reproducible quantification of proteins with high sequence coverage.

(Published Online: 15 Dec 2004, A. Schmidt, J. Kellermann, F. Lottspeich, *Proteomics* 2004, 4, DOI 10.1002/pmic.200400873).

The exclusive license for the ICPL™-technology is hold by *TOPLAB GmbH*, Martinsried, Germany (<http://www.toplab.de>). *Serva electrophoresis GmbH* has signed a license agreement for the world wide distribution of the ICPL™ reagent kit.

### Technical support:

For detailed technical questions, please contact Toplab GmbH:

Tel.: +49-89-85651281

E-mail: [halder@toplab.de](mailto:halder@toplab.de)

### Key features:

- **Labelling of proteins** at an early time point reduces the possibilities of experimental errors to a minimum.
- **Labelling of proteins** allows also the identification and quantification of protein isoforms and posttranslational modifications.
- **Labelling of proteins** and following separation- and fractionation methods allow the reduction of the enormous complexity of biological samples on the protein level.

### 1.1. Kit components

<sup>12</sup> C-Nic-reagent (purple) in DMSO	22 µl
<sup>2</sup> D-Nic-reagent (orange) in DMSO	22 µl
<sup>13</sup> C-Nic-reagent (black) in DMSO	22 µl
Stop solution 1 (green)	200 µl
Reduction solution (yellow) in TCEP	200 µl
Alkylation reagent (blue) (Iodoacetamide)	6 x 14.8 mg
Stop solution 2 (red) (Hydroxylamine)	200 µl
Lysis buffer (white) (Guanidine-HCl)	10 ml
Solution buffer (white)	1.5 ml
Protein mix L (white)	20 µl lyophilized
Protein mix M (white)	20 µl lyophilized
Protein mix H (white)	20 µl lyophilized

The kit contains reagents for 3 x 6 reactions. Each reaction may be performed with 50 - 100 µg of total protein in a volume of 20 µl.

**Additionally required chemicals and equipment not provided in the kit:**

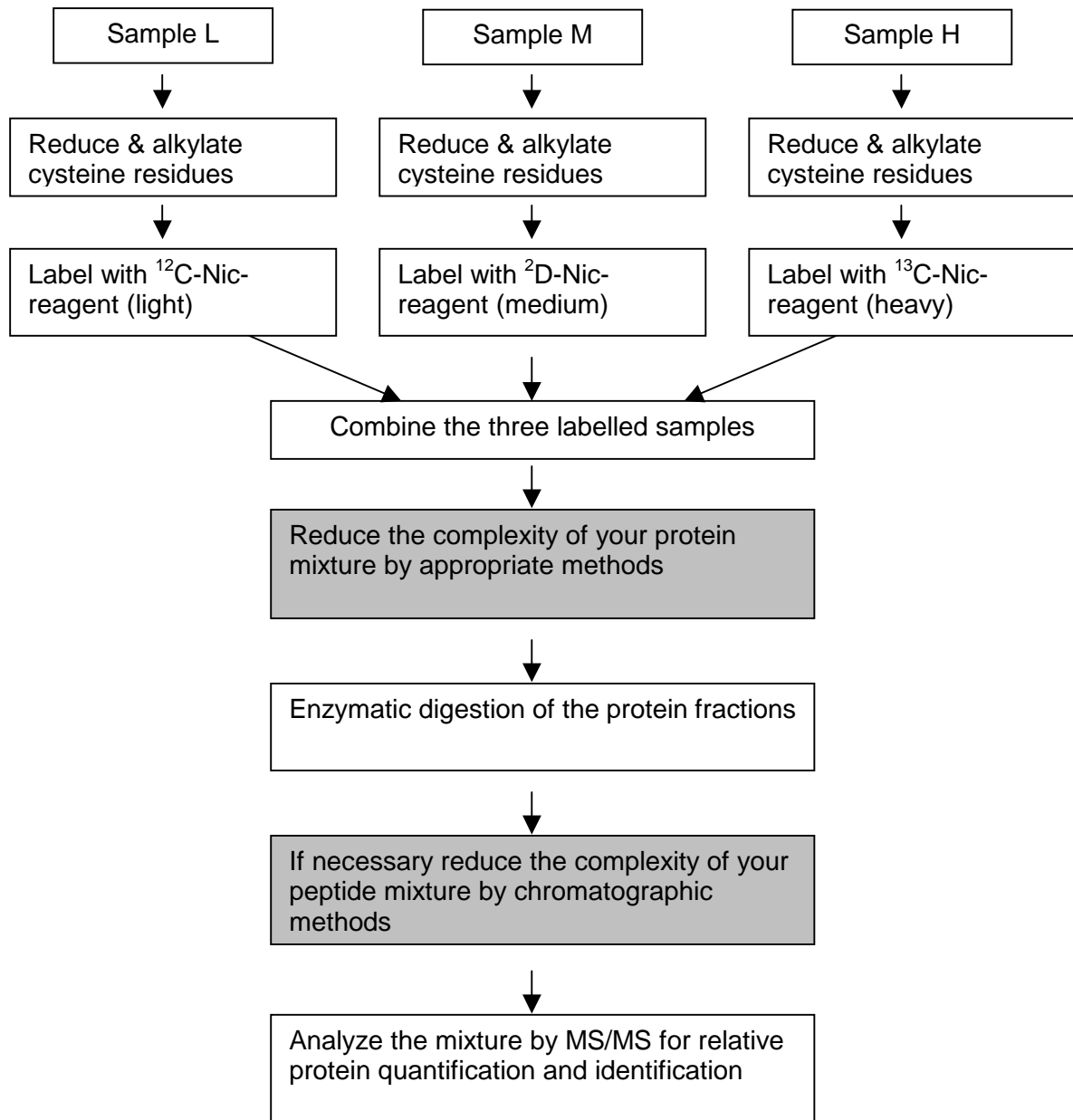
- Trypsin or endoproteinase GluC
  - 4M urea
  - 25 mM Tris
  - 2 N NaOH
  - 2 N HCl
  - Argon
  - Acetone (ice cold)
  - 80 % acetone (ice cold)
- 
- pH-meter equipped with micro-electrode
  - pH-paper
  - Cool centrifuge/ultra centrifuge
  - Thermo mixer (up to 60 °C)

**1.2. Storage conditions**

The kit will be shipped at room temperature and is stable for at least 14 days at this temperature. Upon arrival store SERVA ICPL™ Kit immediately at – 20 °C. Long term storage at – 80 °C is as well possible.

## 2. ICPL™ Triplex protocol

### 2.1. Overview of the ICPL™ reagent technology



**Fig. 1:** Overview of the ICPL™ reagent technology

If you are running the ICPL protocol the first time, it is recommended, to analyse the provided protein mixtures through the entire protocol. The expected results should be identical with the results shown at the end of the protocol.

## 2.2. Dissolution of the protein sample

### 2.2.1. Required solutions

- Lysis buffer (white)

#### **Safety information:**

*The lysis buffer is harmful if swallowed and irritating to eyes and skin. Wear suitable protective clothing and gloves.*

### 2.2.2. Procedure

In a first step, the three protein or cell samples (control/sample) will be dissolved in lysis buffer (white).

**Important:** The protein concentration should be above 5 mg/ml, but must be in any case more than 2.5 mg/ml.

**The following lysis protocol is recommended:**

- Vortex 2 min.
- Leave sample in thermo mixer at 1000 rpm for 20 min. at 25 °C
- Vortex 2 min.
- Sonicate 4 times for 30 sec. in ultrasound bath (cool sample during pauses in ice water for 2 min.)
- Vortex 1 min.
- Leave sample in thermo mixer at 300 rpm for 15 min at 25 °C
- Vortex 2 min.
- Spin sample for 30 min. at 75 000 g (ultra centrifuge)
- Use the supernatant directly for the further analysis steps.

**Caution:** If lysis buffers different from the provided lysis buffer are used, they should be tested with the protein standard mixture before usage for other samples. Important is the correct pH (8.5), and the absence of primary amino group containing agents. Urea, thiourea, CHAPS can be used, however.

## 2.3. Determination and adjustment of the protein content of the samples

Prior to labelling, the protein concentration of both samples has to be determined by Bradford assay. Subsequently the concentration has to be adjusted to 5 mg/ml by adding Lysis buffer (white).

**Note:** The protocol is optimized for a protein concentration of 5 mg/ml. However, it works as well at 2.5 mg/ml. As the recovery rate of the protein precipitation step below depends strongly on the total protein concentration, losses are likely when working with lower protein concentrations. Therefore, it is extremely important, to keep the concentrations of the reagents strictly as recommended. If you want to work with increased sample volumes of 40  $\mu$ l (for example to facilitate the pH measurement), you rather double the sample amount (if available) than dilute the sample, and you also have to double the volumes of the reagents given in this protocol! Therefore, only half the numbers of samples can then be labelled with the content of this kit.

## 2.4. Reduction and blocking of cysteine residues (Carbamidomethylation)

### 2.4.1. Required solutions

- Reduction solution (yellow)
- Alkylation reagent (blue)
- Solution buffer (white)
- Stop solution 1 (green)
- Possibly, 2 N NaOH or HCl  
Then, you additionally need a micro pH-meter for adjustment of the pH value

#### **Safety information:**

*The alkylation reagent (iodoacetamide) is irritant. Do not breath dust and wear suitable protective clothing and gloves.*

### 2.4.2. Procedure

#### **Before start:**

- Check the pH of the sample buffer and if necessary, adjust to  $8.5 \pm 0.1$  by addition of HCl or NaOH! A micro pH-meter is recommended. Before every measurement, the tip of the electrode is rinsed with distilled water and dried **very carefully** with a dry, dust-free tissue to avoid sample dilution. Alternatively, you can check the pH by pipetting a small volume (1 – 2  $\mu$ l) on pH-paper.
  - The carbamidomethylation protocol is identical for all samples, L, M and sample H.
1. Add **0.5  $\mu$ l reduction solution (yellow)** to 20  $\mu$ l sample solution (equivalent to 100  $\mu$ g protein) and **reduce proteins for 30 min at 60  $^{\circ}$ C**.

2. **Cool sample to room temperature and spin down sample** to remove condensed solution from the lid.
3. Dissolve **one cup of alkylation reagent (blue) in 200 µl solution buffer (white)** and wrap in aluminium foil (light protection).
4. **Add 0.5 µl** of this freshly prepared alkylation reagent **to each sample**, wrap samples quickly in aluminium foil for light protection and leave samples **for 30 min at 25 °C**.
5. Stop reaction by adding **0.5 µl stop solution 1 (green)** to each sample and incubate for **15 min at 25 °C**.

## 2.5. Isotope labelling of the protein samples

### 2.5.1. Required solutions

- <sup>12</sup>C-Nic-reagent (purple)
- <sup>2</sup>D-Nic-reagent (orange)
- <sup>13</sup>C-Nic-reagent (black)
- Stop solution 2 (red)
- Argon
- 2 N NaOH
- 2 N HCl

#### **Safety information:**

*The stop solution 2 (hydroxylamine) may cause sensitization by skin contact. Harmful: Danger of serious damage to health by prolonged exposure if swallowed. Avoid contact with skin. Wear suitable protective gloves.*

### 2.5.2. Procedure

1. After carbamidomethylation **add 3 µl of <sup>12</sup>C-Nic-reagent solution (purple)** to sample L, **3 µl of <sup>2</sup>D-Nic-reagent solution (orange)** to sample M and **3 µl of <sup>13</sup>C-Nic-reagent solution (black)** to sample H.
2. **Overlay the three samples with argon** (or equivalent) to exclude oxidation, vortex (10 sec.) and sonicate for 1 min in ultrasound bath. Spin down samples.
3. Incubate samples **for 2 h at 25 °C**.
4. **Add 2 µl of stop solution 2 (red)** to each sample and incubate for **20 min at 25 °C** to destroy excess reagent.
5. **Combine all three ICPL labelled samples** and vortex thoroughly.
6. **Adjust the pH** of the mixture to **11.9 ± 0.1 by adding 2N NaOH** (about 2 µl for 2 x 20 µl sample volume) to destroy possible esterification products. **After 20 min add** the same amount of **2N HCl** to neutralize sample (usually it is not necessary to check the pH).

## 2.6. Purification of the labelled proteins by acetone precipitation

### 2.6.1. Required solutions

- Acetone cooled to  $-20\text{ }^{\circ}\text{C}$
- 80 % acetone / 20 % water cooled to  $-20\text{ }^{\circ}\text{C}$

### 2.6.2. Procedure

1. **Add** the equal amount of **dist. water** to your sample, i.e. about **57  $\mu\text{l}$**  (= 2 x (20  $\mu\text{l}$  sample + 1.5  $\mu\text{l}$  reduction + 3  $\mu\text{l}$  reagent + 2  $\mu\text{l}$  stop solution) + 4  $\mu\text{l}$  pH adjustment).
2. **Add** 5-fold excess (related to total volume of sample and water) of **ice-cold acetone** to your sample, i.e. **570  $\mu\text{l}$**  acetone (= 114  $\mu\text{l}$  x 5) and leave sample at  $-20\text{ }^{\circ}\text{C}$  overnight.
3. **Spin down** precipitated proteins at **20 000 g for 30 min at  $4\text{ }^{\circ}\text{C}$**  .
4. **Overlay** precipitated proteins with ca. 100 – 200  $\mu\text{l}$  **ice-cold 80 % acetone**, shake carefully in your hands and **spin down** again at **20 000 g for 5 min at  $4\text{ }^{\circ}\text{C}$** .
5. **Discard supernatant** and remove remaining acetone at room temperature by evaporation (let the cup stand open).
6. The samples can be stored now at  $-80\text{ }^{\circ}\text{C}$  or directly dissolved in appropriate buffers for protein separation (1D- or 2D-gels).

**The further workflow depends on the complexity of the sample. Complex proteome samples should be separated to a convenient complexity by any protein fractionation method.** The protein mixes L + H can be cleaved directly by trypsin. For a better solubility, we recommend to dissolve the acetone precipitate using a buffer containing 4 M urea. However, before digestion with trypsin or endoproteinase GluC the urea concent should be diluted to 2 M urea.

## 2.7. Enzymatic digestion of the labelled proteins

### 2.7.1. Required solutions

- 25 mM Tris/4 M urea
- 25 mM Tris/HCl pH 8.5 resp. 7.8
- Trypsin
- Endoproteinase GluC

### 2.7.2. Procedure

Enzymatic digestions of the labelled samples are performed according to common protocols. We recommend using trypsin or endoproteinase GluC as enzymes.

1. Dissolve sample in 25 mM Tris, 4 M urea, pH 8.5 for tryptic cleavage or pH 7.8 for cleavage with endoproteinase GluC.
2. Add enzyme in a protein/enzyme ratio of 50:1 for trypsin or 30:1 for endoproteinase GluC.
3. Incubate sample over night at 37 °C (trypsin) or 25 °C (GluC).

## 2.8 Peptide Labelling with ICPL

For labelling of peptides with ICPL™ we recommend to directly solve the samples in lysis buffer and then to label according the protocol (see 2.5.). Only if the peptides contain cysteine residues, samples must be reduced and blocked by carbamidomethylation as described in 2.2. to 2.4. Instead of an acetone precipitation, the samples are purified by a C18-ZipTip column.

### Purification of peptides by RP-C18 material

#### Required material

- ZipTip C18 (e.g. Millipore or any other distributor, or self packed in gel loader tips)
- 0.5 % Trifluoroacetic acid in HPLC grade water (solution A)
- 0.5 % Trifluoroacetic acid in 50 % acetonitrile (solution B)

#### Procedure

1. Equilibrate the beads by washing with several column volumes of solution A.
2. Dilute the peptide sample 1:1 with solution A
3. Press the diluted peptide sample through the column
4. Wash the column with several column volumes of solution A
5. Elute the beads with 2 x 10 µl of solution B
6. Remove the acetonitrile by putting the samples into a Speed-Vac for 10 minutes

## 2. 9. Mass spectrometry and data analysis

After digestion, the samples can be directly analyzed by mass spectrometry, preferentially by LC-MALDI-TOF/TOF or LC-ESI-MS/MS.

### 2.9.1 Mascot search

- **Select endoproteinase Arg-C as enzyme** in the search dialog in case trypsin digestion was used in the lab.

Note	After the modification of lysine (K) residues by ICPL, lysine is protected against proteolytic digestion. Therefore, trypsin cleaves solely C-terminal of arginine (R), i.e., only the Arg-C activity remains and Endoproteinase Lys-C can not be used at all!
------	--

- For Mascot searches, the ICPL modified residues have to be added to the **modification file (mod\_file) on the local Mascot server**. The following 6 entries have to be made with exactly the same name strings to ensure software compatibilities (e.g. with Bruker Daltonics' WARP-LC and BioTools bioinformatics packages):
  1. Title: ICPL\_heavy  
Residues: K 239.13680 239.22440
  2. Title: ICPL\_light  
Residues: K 233.11640 233.27000
  3. Title: ICPL\_medium  
Residues: K 237.14773 237.30197
  4. Title: ICPL-heavy (N-term)  
ProteinNterm: 112.04970 112.05830
  5. Title: ICPL-light (N-term)  
ProteinNterm: 106.02930 106.10390
  6. Title: ICPL-medium (N-term)  
ProteinNterm: 110.13070 110.30197
- Working with **Mascot 2.1** and below: all 4 modifications have to be selected as variable modifications.
- Working with **Mascot 2.2** the light modifications have to be selected as fixed modifications, heavy as variable modifications.
- **Carbamidomethylation** has to be defined as fixed modification.

### 2.9.2 Quantification

- The mass difference of  $^{12}\text{C}$ - and  $^{13}\text{C}$ -labeled peptides is 6.0204 Da per labelled amino group, and those of  $^{12}\text{C}$ - and  $^2\text{D}$ -labeled peptides 4.05 Da per labelled amino group.
- The mass difference between labelled ( $^{12}\text{C}/^2\text{D}/^{13}\text{C}$ ) and unlabelled peptides are 105.0215Da/109.0715 Da/111.0419 Da for each modified amino group.

- **The H/M/L ratios of the proteins are calculated** as average or median values of the H/M/L ratios of the individual peptides. In general, the calculation should be done by peak-height of the entire isotopic cluster as enabled in the respective quantification software of the instrument manufacturer (e.g., Brukers WARP-LC 1.0 software). Some instruments may provide superior data if peak areas are used as quantification measure, though.

Note: **Reliable protein quantification requires at least 5 peptide ratios** for a reasonable statistical treatment including outlier detection. If too many proteins provide less peptides for quantification, the pre-fractionation efforts prior to LC-MS/MS may need to be enhanced or chromatographic or mass spectrometric methods to be improved. Also repetition of the experiment is a standard approach to improve data reliability.

### 3. Quantification of the protein test mixture by the ICPL™ method

To test the ICPL™ protocol, the ICPL™ kit contains three protein mixtures (L, M and H) each containing different amounts of 3 standard proteins.

Protein	Protein mix L	Protein mix M	Protein mix H	Relative amount
BSA (bovine)	13.5 µg	13.5 µg	13.5 µg	1:1:1
Ovalbumin (chicken)	24 µg	12 µg	6 µg	4:2:1
Carbonic Anhydrase II (bovine)	12 µg	12 µg	24 µg	1:1:2

1. Dissolve the three protein mixtures in 20 µl of lysis buffer (white) each and label the proteins following the protocol, starting with step 2.4. "Carbamidomethylation" on page 20 (e.g. protein mix L with the <sup>12</sup>C-reagent, protein mix M with the <sup>2</sup>D-reagent and mix H with the <sup>13</sup>C-reagent.)
2. After labelling and precipitation, the proteins have to be dissolved in 20 µl of a buffer (containing 4 M urea), suitable for enzymatic cleavage with trypsin.
3. After cleavage, the samples are directly analyzed by MS, preferentially by MALDI-TOF-TOF-MS. The ratios of the proteins are calculated by the ratio of the peak areas.

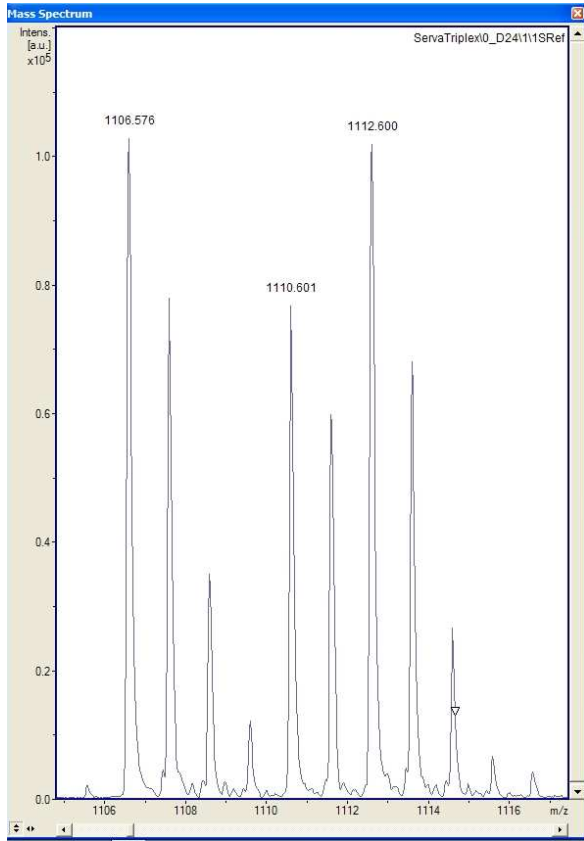
The following peptides were analyzed by MALDI-TOF-TOF (0.1 pmol of the labelled and cleaved sample was analyzed, NanoRP-LC, Bruker Daltonics).

Protein	Mass observed	Mass expected	Ratio M/L	Ratio H/L	Peptide sequence
BSA	1106.69	1106.61	0.97	0.88	ALK*AWSVAR
BSA	1187.64	1187.62	1.13	1.10	THK*SEIAHR
BSA	1300.72	1300.61	0.86	0.85	CASIQK*FGER
BSA	1567.81	1567.79	1.03	1.07	LRCASIQK*FGER
BSA	1745.05	1744.95	0.96	0.85	K*VPQVSTPTLVEVSR
BSA	2977.42	2977.33	1.04	1.05	CCTK*PESERMPCTEDYLSLILNR
BSA	3302.64	3302.57	0.87	0.87	LCVLHEK*TPVSEK*VTK*CCTESLVNR
		Mean	0.98	0.95	
		Stdev [%]	9.82	11.98	
Ovalbumin	1062.63	1062.60	0.47	0.21	TQINK*VVR
Ovalbumin	1226.80	1226.70	0.42	0.20	K*IK*VYLPR
Ovalbumin	2189.28	2189.11	0.48	0.19	YPILPEYLQCVK*ELYR
Ovalbumin	2389.30	2389.17	0.42	0.23	VTEQESK*PVQMMYQIGLFR
		Mean	0.45	0.21	
		Stdev [%]	7.15	8.23	
CarboAnhydrase	1790.91	1790.98	0.95	1.91	PALK*PLALVYGEATSR
CarboAnhydrase	1994.89	1994.93	0.91	2.04	GPEHWHK*DFPIANGER
		Mean	0.93	2.00	
		Stdev [%]	3.01	4.65	

Stdev = standard deviation

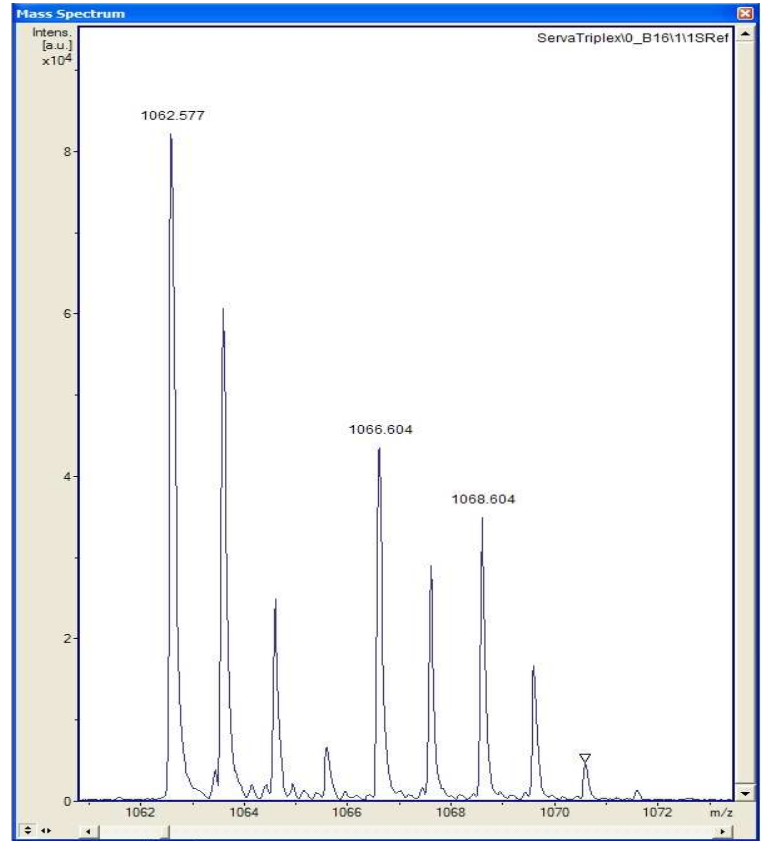
**BSA 1:1:1**

**Peptide sequence: ALK\*AWSVAR**



**Ovalbumin 4:2:1**

**Peptide sequence: TQINK\*VVR**



**Carbonic Anhydrase 1:1:2**

**Peptide sequence: PALK\*PLALVYGEATSR**

